

ATTACHMENT METHODS

Note: Carol recommends making a yo-yo the size to cover the center of the back of the finished flower frill. This gives a finished look and a nice flat base to attach any pin or clasp.

Headbands, Hairclips & Hatbands
Sew with needle and thread or hot glue.

Scarves, Necklaces, Shoes & Handbags
Sew or hot glue onto an alligator clip.

Lapel Pins & Corsages
Sew or hot glue onto a pin back clasp.



Lunch Bag
by Alicia Salazar



Hat by
Beckie Hansen



Necklace
by Carol C. Porter



Sandals
by Alicia Salazar

Clover

Flower Frill Embellishments

FREE PROJECTS



MADE WITH
Flower Frill
Templates
Easy Flip & Fold Flower Maker!



Fun Frill Headbands

by Alicia Salazar

Embellish your existing wardrobe and home accessories with flower frills.



Napkin Holder by Beckie Hansen



Baby Shoes by Amber Webb



Scarf by Beckie Hansen



NEW Flower Frill TEMPLATES

Embellish your jewelry, wardrobe and home accessories with beautiful Flower Frills!

Easy Flip and Fold Flower Maker!



ART. NO. 8460
SMALL & MEDIUM

ART. NO. 8461
LARGE & EXTRA LARGE

Each package contains 2 templates per size (total of 4).

CLOVER NEEDLECRAFT, INC.

Ontario, CA 91761 U.S.A. www.clover-usa.com

TOLL-FREE: (800) 233-1703 FAX: (909) 218-2161



CT0084
OCT 2010

make-it

more project ideas available at www.clover-usa.com

Flower Frill Embellishments

No matter where we look these days we see Flower Frills on headbands, hairclips, shoes, necklaces, belts, lapel pins, handbags and just about any place in need of a little showy frill! From haute couture right on down to newborn babies... Flower Frills are making the scene.

Follow these easy instructions for making the Flower Frill petals. Try different textures and types of fabrics and have fun mixing up colors as well.



Flower Frills
by Alicia Salazar

WHAT YOU'LL NEED:

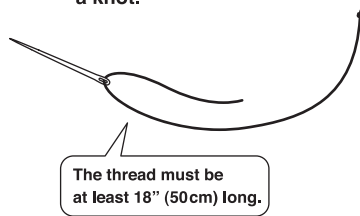
Fabric Sewing Needle
Scissors Strong hand sewing thread

APPROX. FINISHED SIZE & REQUIRED FABRIC SIZE

SMALL: 3" - approx. 3-3/4" square
MEDIUM: 4" - approx. 4-3/4" square
LARGE: 5" - approx. 5-3/4" square
EXTRA LARGE: 6" - approx. 6-3/4" square

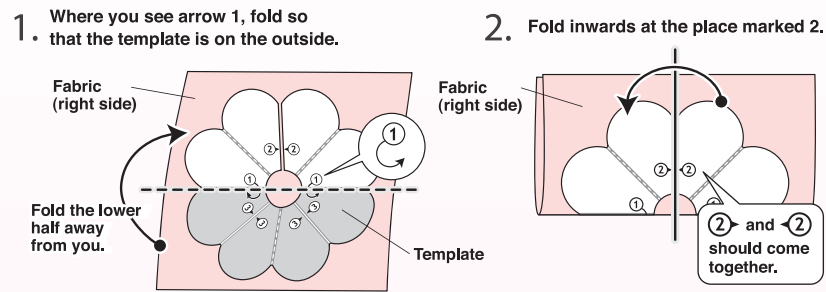
1 Preparation

Thread the needle and make a knot.



2 Making the petals

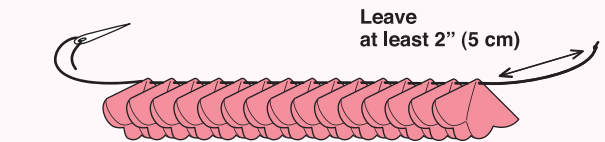
Place the template on the front side of the fabric and fold the two together.



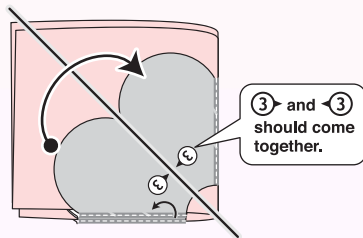
6 Repeat steps 2 - 5 and thread the petals onto the same thread.

Target number of petals: 15 - 25 for each flower.

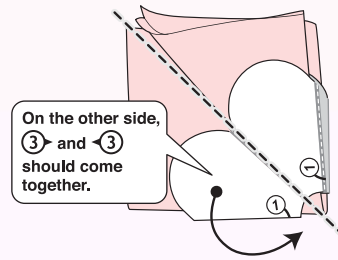
*Decide on the number of petals according to the type of fabric used and your personal preference.



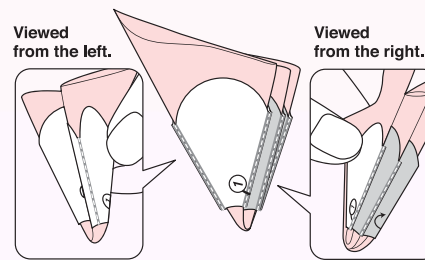
3 At the place marked 3, fold the top layer only inwards.



4 Fold the lower layer away from you.

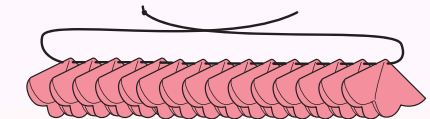


5 You have now finished folding.

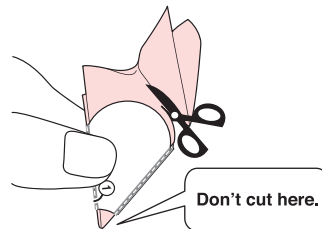


7 Finishing

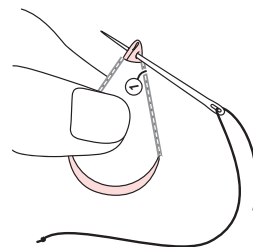
Remove the needle; tie the two ends of the thread together using a double knot. Pull petal folds open to create a nice, full Frill Flower.



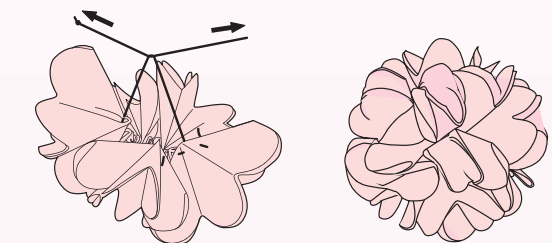
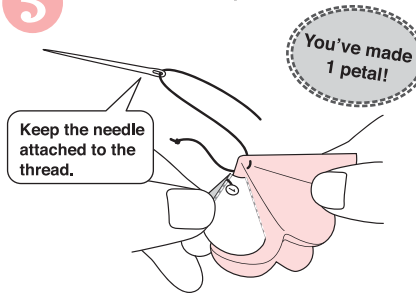
3 Cut the fabric following the template. Try pinking shears for another "look". *Be careful not to cut the template.



4 Where indicated, insert the needle and pull the thread through.



5 Remove the template.



For attachment methods,
see reverse side.

You've finished
making
your flower!