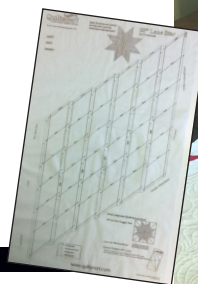




PRINTED INTERFACING



## FEATHERED STAR Layout Variation

by Mattie Rhoades Haines

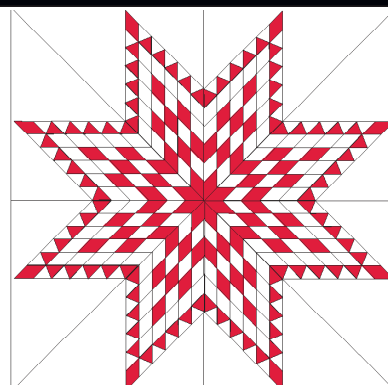
- Split-diamonds made easy! Only rectangles to cut!
- Used with our tried and true 58" Lone Star!
- Perfect matching - amazing & fast results!

**SKILL LEVEL:** Generally, Quiltsmart patterns are written for all skill levels. This pattern is a bit more challenging than our 38" or 58" Lone Star. We recommend that you make one of those first. Then, this one will come as a sweet variation and will be a joy to make! It is an upcycle of our standard - It adds in a split-diamond and a more challenging layout of color.

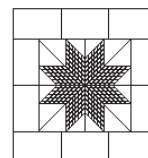
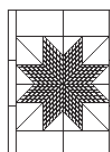
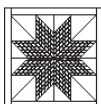
### YARDAGE & CUTTING CHART

Strips are cut width of fabric (WOF), you will get about 7 rectangles per strip.

**NOTE:** 58" Lone Star Instructions (right) give full detailed instructions on making the Lone Star and are required to make this layout variation. This Layout Variation gives yardage and cutting instructions for only this layout. Instructions for the 58" Lone Star are included in the Classic Pack.



Great for  
2½" strips!



#### QUILT TOP

Approximate Finished Size      58" x 58" (with border 66" x 66")

#### LAP/WALL

TWIN  
66" x 86"

QUEEN  
90" x 97"

Quiltsmart Interfacing (the star size is the same for all quilt sizes)

8 panels

White

1¾ yard

Cut (22) WOF strips into (152) 2½" x 5½" rectangles.

Red

2½ yards

Cut (31) WOF strips into (216) 2½" x 5½" rectangles.

Star Background (same as Base Pattern)

2 yards

Cut (4) 13½" squares & (4) 19" squares

Border

1 yard (optional)

2½ yards

6 yards

Cut as in Base Pattern Instructions.

**QUILT FINISHING** (same as Base Pattern Instructions, yardage included here for your convenience.)

Backing

4 yards

5½ yards

8½ yards

Batting

72" x 72"

64" x 95"

99 x 104

Binding

½ yard

¾ yard

1 yard

#### HELPFUL TOOLS

Quiltsmart Diamond Fussy-Cut Template is helpful for cutting rectangles, in addition to using it for fussy cutting the fabric. Open-toe presser foot, cutting mat, rotary cutter, ruler, appliqué pressing sheet.

No part of this pattern may be copied without permission from Quiltsmart.

© 2017 by Quiltsmart, Inc. All rights reserved.

# FEATHERED STAR Instructions by Mattie Rhoades Haines

**1** First, become familiar with the layout. The 58" Lone Star has 6 rows and 6 columns. The "start" is found at the tip of Column 1.

Colors are arranged as follows in each column:

**R** - Red

**W** - White

**S** - Split-Diamond

Column 1: **RWRWWS**

Column 2: **WRWRWS**

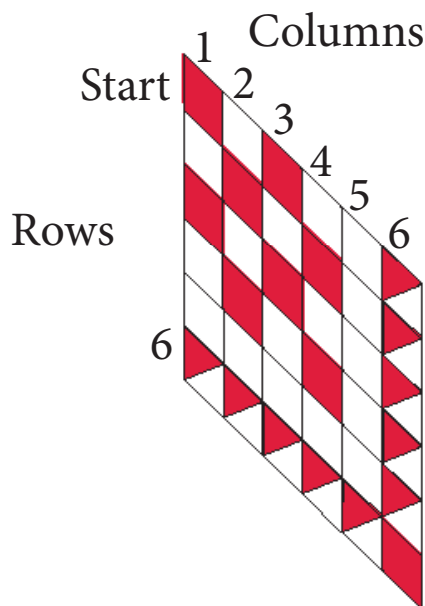
Column 3: **RWRWWS** (same as Col 1)

Column 4: **WRWRWS** (same as Col 2)

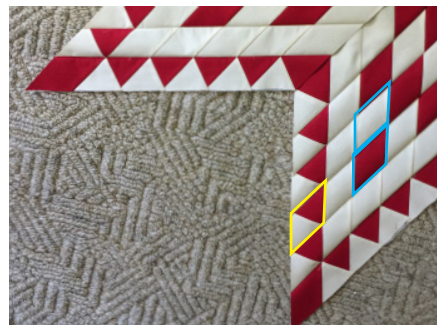
Column 5: **WWWWWS**

Column 6: **SSSSSR**

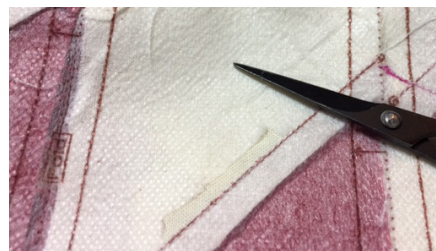
Note the pattern formed from the center, "start" there is a Red Diamond, then 3 Red Diamonds, 3 more, another single, and a Red Diamond at the outer point.



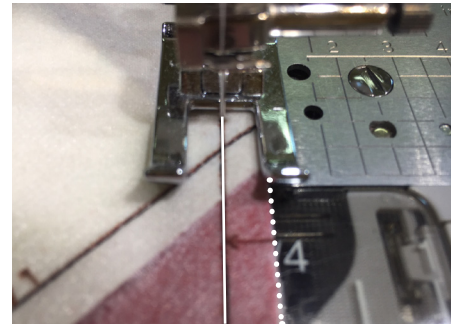
**2** Second, become familiar with the Split-Diamond (outlined in yellow to the right). "Regular" Diamonds are shown outlined in blue. In this particular pattern, the Split-Diamond will always start with Red, and finish with White. Other patterns can differ. How to make a Split-Diamond is a free download on our website, but included at the end of this layout for your convenience. There is also a video on our website.



**3** Third, be aware that Quiltsmart Lone Star printed interfacing in its original form (top), had the "Sew Line" words printed above the sewing line. This can show through if using very light fabric. It can be cut away by gently inserting a scissors and cutting it out. Be careful. The newer versions have the "Sew Line" words below the line and they will not show as they will end up on the underside of the seam allowance. If you do use a light fabric, and the original interfacing, check to see if the words do show through - if they do, cut them away.



4 Not that I strive for accuracy, but - you will get a higher chance of "perfection" if you are careful to sew on the lines and fold on the lines.



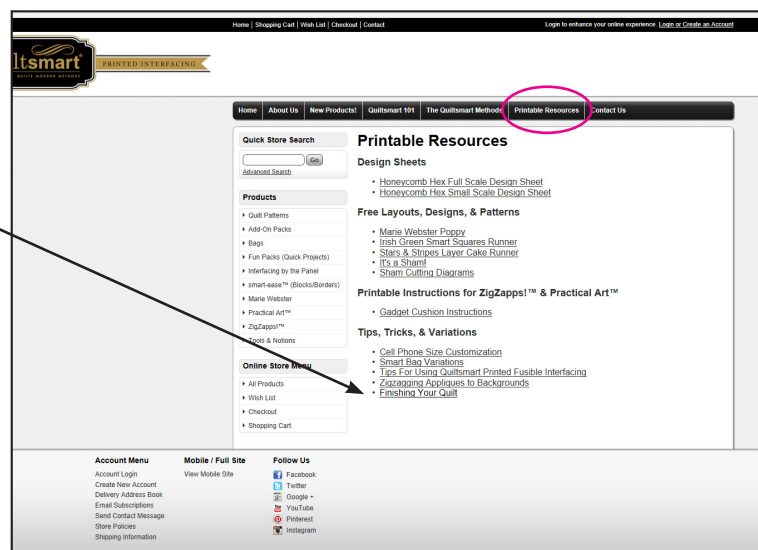
5 Follow "Split Diamonds Download" for sewing the Split Diamonds. For your convenience, this sheet is also part of this download.



6 Follow your base pattern instructions for sewing the diamonds together and adding the background. The instructions refer to Fabrics 1 - 6. You will only have two fabrics. So, Fabric 1 is the start - Red. Other than that, the layout varies and you will follow Step 1 of this sheet for color placement.



7 Quilt & bind as desired. For information on finishing your quilt, go online to quiltsmart.com/Printable Resources/FinishingYourQuilt.







PRINTED INTERFACING

Single Sheet Inspirations

Bedquilt: 58" Lone  
Star with Quiltsmart  
Feathered Star  
Layout. Shams:  
North Star &  
Diamond Border  
with Split Diamonds.



# SPLIT-DIAMONDS™ METHOD

by Mattie Rhoades Haines

- This method can be used with our popular 38" Lone Star, 58" Lone Star, the Diamond Border, and the Queen Broken Lone Star!
- Use your design sheet included with instructions and have fun designing where the split-diamonds will go in your quilt - you can have an ordered placement like we show here on this Feathered Star or random.
- Split-diamonds are based on two fabrics sewn together along the diamond middle - right on the interfacing - yielding perfect matching.



## Important Information

Look for a video -  
See [quiltsmart.com/QuiltPatterns/58" Lone Star](http://quiltsmart.com/QuiltPatterns/58\)

Base Patterns:  
38" Lone Star  
58" Lone Star  
smart-ease Diamond  
Border  
Queen Broken Lone Star

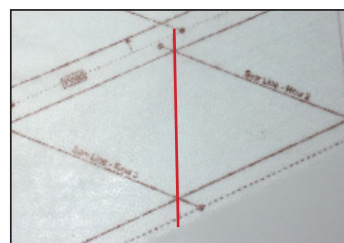
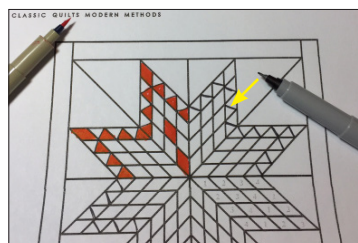
Cut according to your  
layout. The idea is to  
customize your quilt to  
your liking. Our popular  
58" Feathered Star Layout  
is available for purchase on  
our website.

## SKILL LEVEL:

Generally, Quiltsmart  
patterns are written  
for all skill levels. The  
"split-diamonds" add a  
bit of challenge to our  
typically beginner-friendly  
Lone Stars patterns. We  
recommend that you make  
one of those first. Then, the  
split-diamond will come as  
a sweet variation and will  
be a joy to make!

[www.quiltsmart.com](http://www.quiltsmart.com)

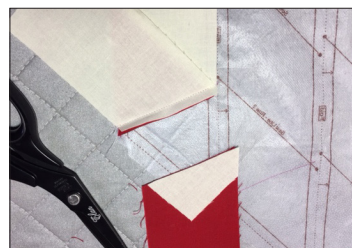
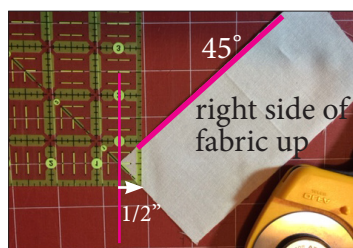
© 2017 Quiltsmart, Inc.



**1** You will use the same size rectangles on the respective quilts as in your base pattern (shown above), but you will need 2 for each diamond that you split. So, for the split-diamonds shown on this page, you would need one red rectangle and one white rectangle for each split-diamond. The layouts that we designed will give you complete yardage and cutting for that specific layout.

**2** Since Quiltsmart's diamonds do not generally appear as diamonds until they are sewn up, use a design sheet and take time marking the split-diamond locations. Draw (yellow arrow) across the middle of the diamonds you wish to split with a pencil (nice cause it is eraseable!) or thin marker. Second, choose your color and fill in. *Steps 2 and 3 show a 38" star marked for a traditional feathered star.*

**3** Using your design sheet as a guide mark the split-diamonds on the interfacing. The interfacing is marked with Columns and Rows. "Start" is the center of the quilt, and the opposite points will be the outside points of your quilt. With a straight edge, draw a thin line across the diamond middle and **ALL THE WAY THROUGH** the seam allowances (see tip step 5) - use a **permanent** ultra thin marker - the color of one of the fabrics, but not brown.



**4** Follow the instructions on your base pattern, starting at the "START" - until you reach a spot that you have allocated for a split-diamond (line drawn across the middle). For the first half of the split-diamond, position the fabric as you would if you were not going to split it. Sew as normal. For the second half of the split-diamond, place the fabric rectangle right side up on the cutting mat along the 45° line. Trim off 1/2" from the corner.

**5** With right sides together, place the point of the cut-away corner at the intersection of the line you drew and the seam allowance (*Tip: you may want to draw a little dot there so it will be easier to see*). Pin at the outsides of the rectangle as shown. Flip and stitch along the line you drew. Flip back over and fold down the rectangle to check that your rectangle will line up nicely with the previous one, and ensure that the raw edges are well in the seam allowance.

**6** Trim to 1/4". Finger press seam well! This will help the seams to be perfectly matched. Fuse strip down. Add more rectangles until you reach the next split-diamond and repeat the method. Look for our "Split-Diamonds" video on our website!



*Tip: If print shows through light fabric (new versions of interfacing do not), gently tuck scissors under interfacing, peel away and cut out.*

