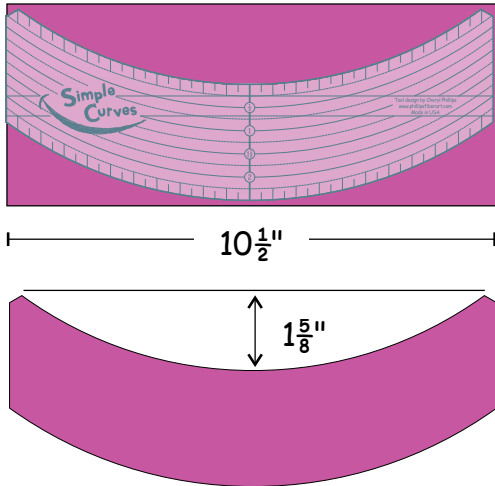
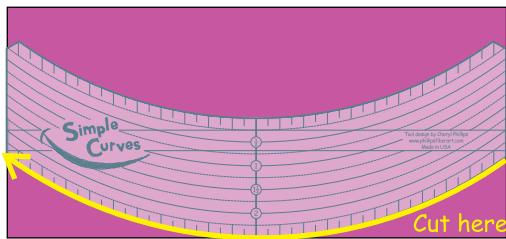


Cutting Narrow Bands with the Simple Curve tool

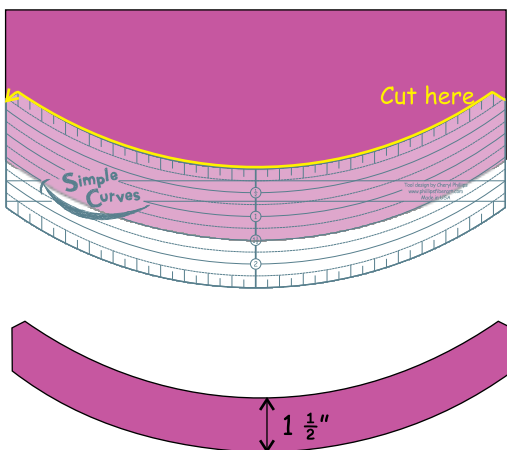
A Simple Curves piece cut with the template is $2\frac{1}{2}$ " wide.



For a narrower curved piece, start with a $10\frac{1}{2}$ " strip. Cut along the bottom edge of the tool.

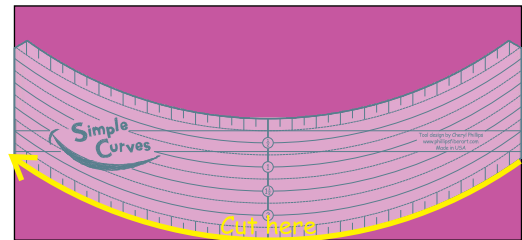


Move the tool down so the desired width line is aligned with the cut fabric edge. The example shows a $1\frac{1}{2}$ " line.

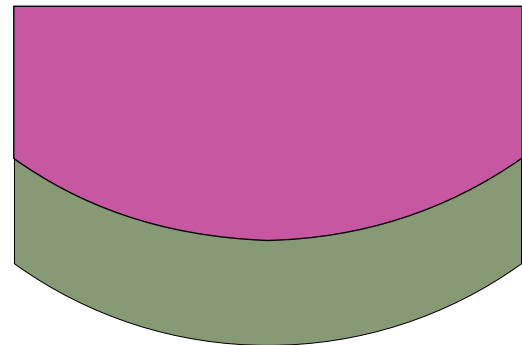


Alternative Method

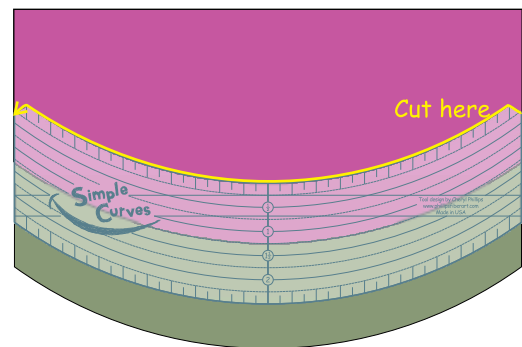
I've found thin curved easier to handle if I add the next curved piece before making the second cut.



First cut the bottom edge of a $10\frac{1}{2}$ " wide strip.



Add the next Simple Curve piece.



Place the $1\frac{1}{4}$ " line on the seam. ($1\frac{1}{4}$ " rather than $1\frac{1}{2}$ " as $\frac{1}{4}$ " is sewn in) Now trim along the upper edge.