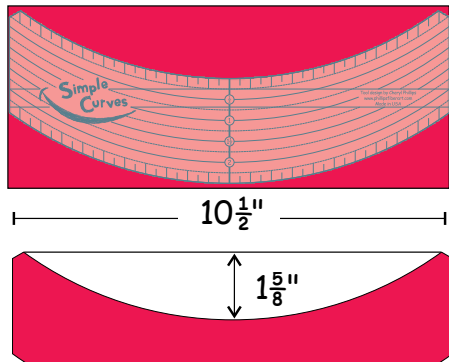


# Cutting Wide Bands with the Simple Curve tool

A Simple Curves piece cut with the template is  $2\frac{1}{2}$ " wide.

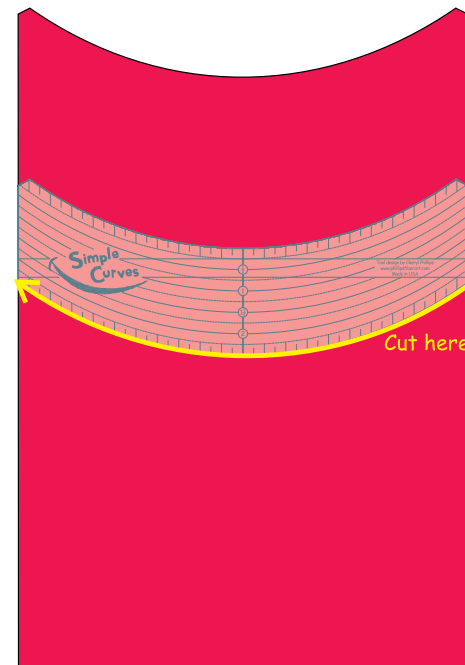
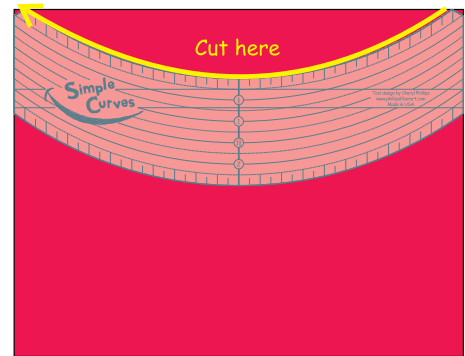
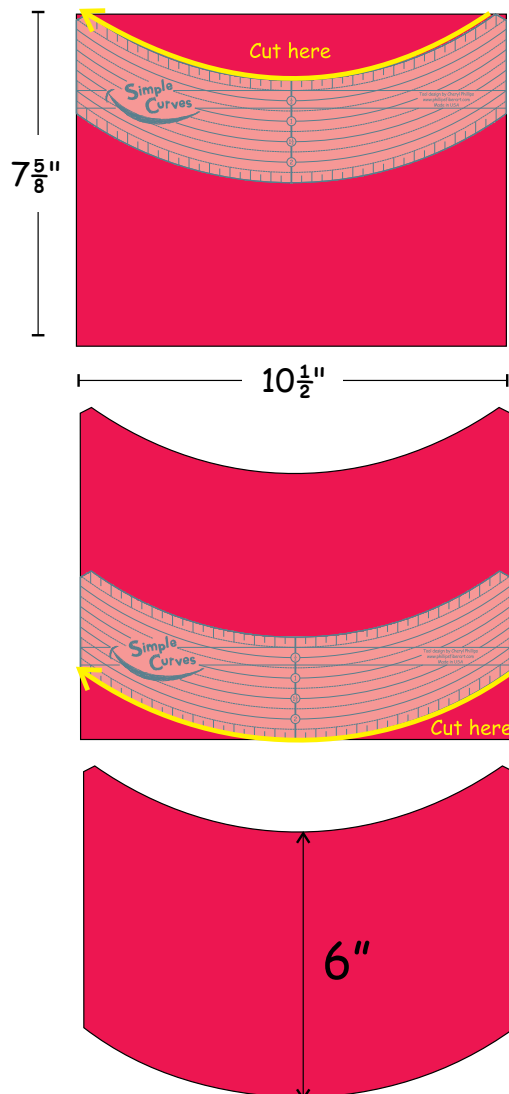


For multiple pieces, cut a strip  $10\frac{1}{2}$ " wide. First cut the top curve.

Then measure from the center 6" and cut along the bottom side of the Simple Curves tool.

For a wider piece, cut a rectangle the width you want plus  $1\frac{5}{8}$ ".

For an example, cut a rectangle  $10\frac{1}{2}$ " x  $7\frac{5}{8}$ " to make a 6" Simple Curves piece.



For the second Simple Curves piece, be **sure** you re-cut the top edge using the upper edge of the tool. The bottom and top edges are not the same curve!

